



# Preparing Rutherford County for the Next 25 Years

Community Open House | May 2022

Minutes until presentation starts:



# Thank you for joining us!

**We're excited to meet you and to hear your opinions on Rutherford County's future growth and development.**

This is a brief overview of the event tonight. The presentation will repeat itself if you join in the middle.

When you are ready, please proceed to the Let's Map it! station.

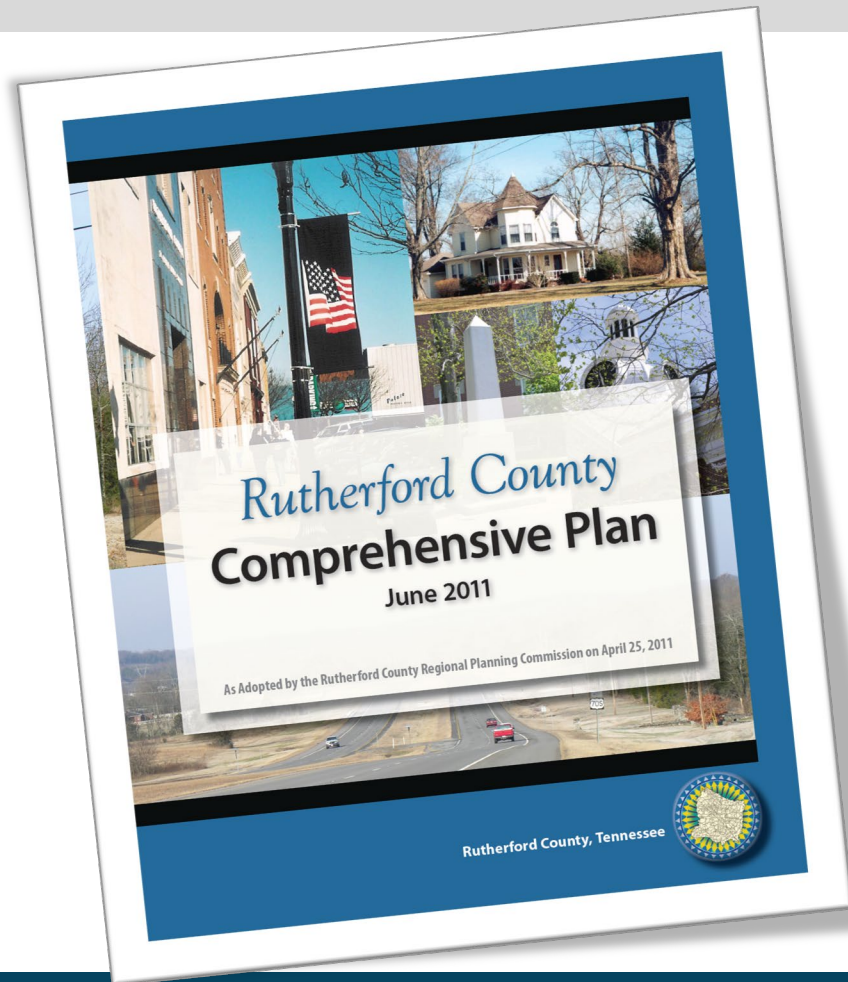
# Purpose of a Comprehensive Plan

**A countywide initiative to engage residents and others in a conversation about future growth.**

## **The plan will:**

- Address land use, economic opportunity, housing, transportation systems, the environment, historic preservation, and more.
- Identify community goals and recommend strategies that can be implemented to achieve those goals.
- Guide land development decisions and infrastructure investments to support current and future growth and development.

# The Existing Plan



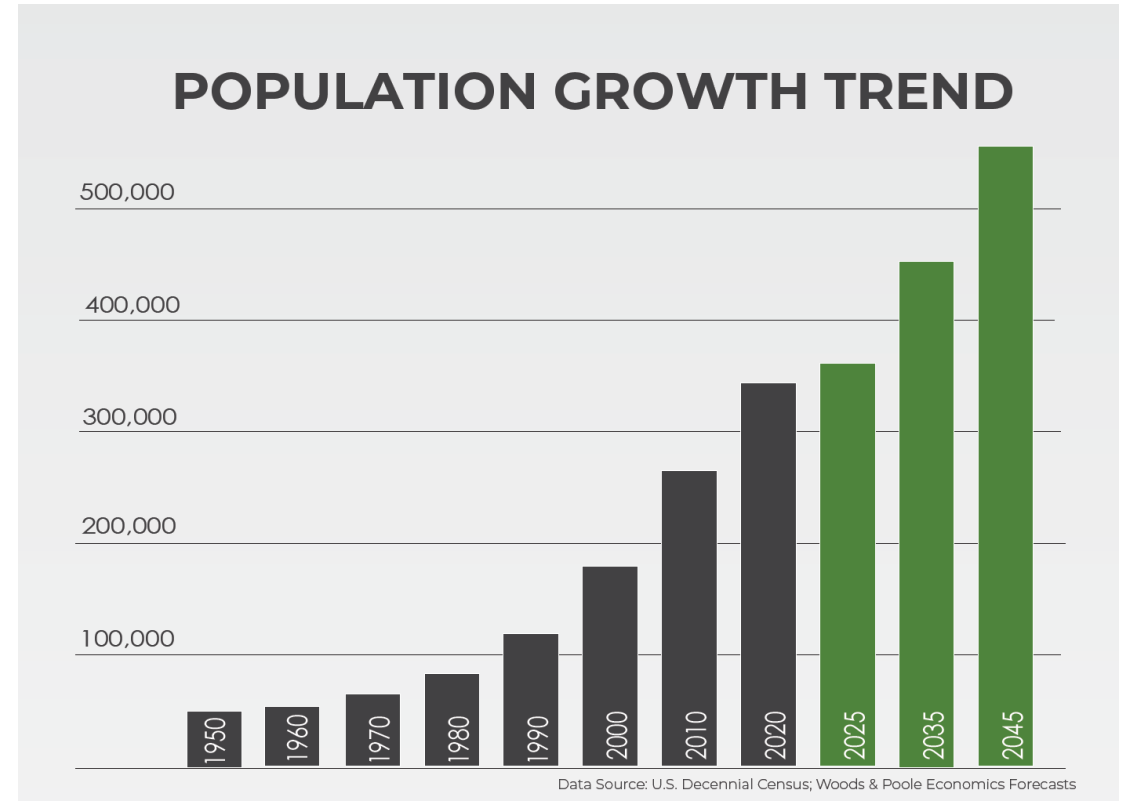
## Adopted Rutherford County Comprehensive Plan:

- Adopted by the Rutherford County Planning Commission in 2011
- A Citizen-based planning process
- Identified a Vision and Values statement and 10 Goals.

# Updating the Plan

## It's time to update the Rutherford County Comprehensive Plan:

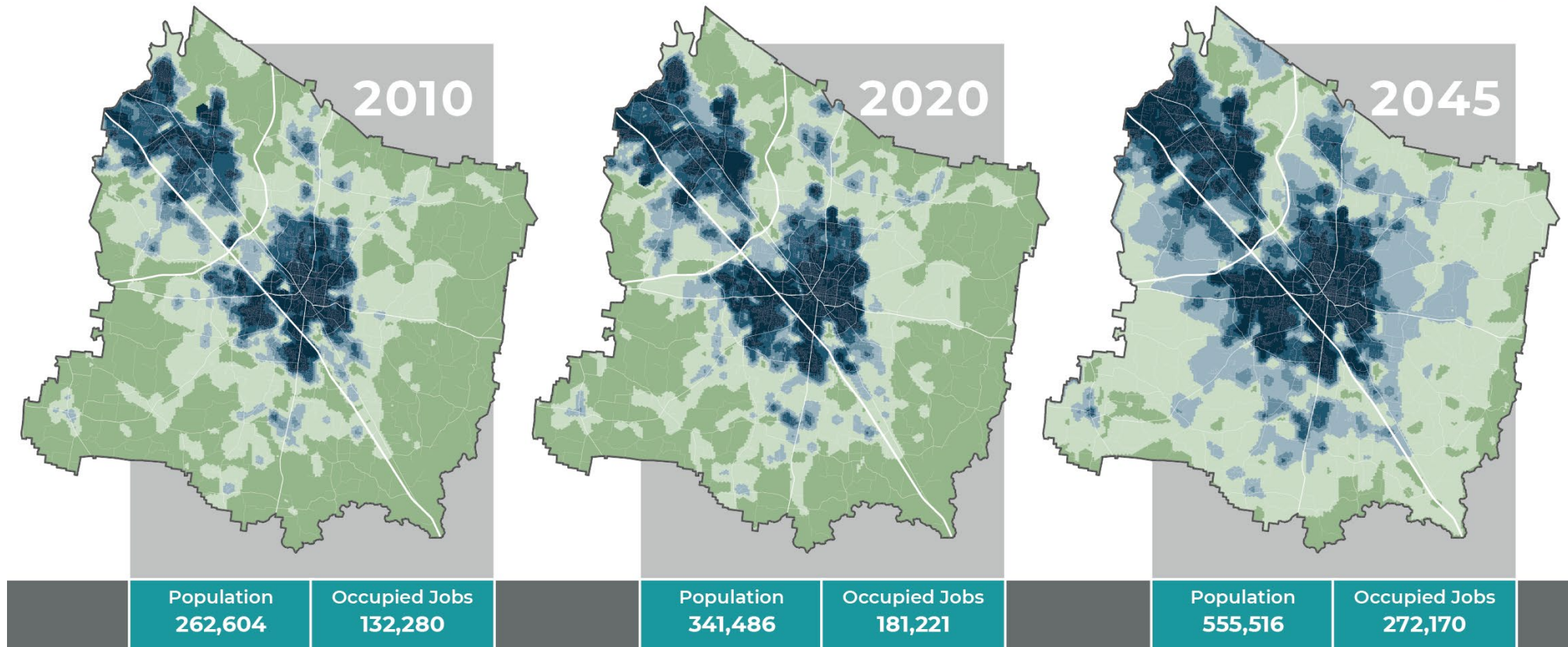
- Since 2010, over 657 people are added every month,
- This is a 30% increase in population
- In 2019, 341,486 people called the county home, and
- By 2045, over 555,500 people are expected to live in the county.



# County Growth Trend

Historic and Projected Development Pattern, 2010 thru 2045

Present day street network used in all three maps.



2010 Population based on U.S. Census Bureau  
2010 Occupied Jobs based on U.S. Bureau of Economic Analysis

2020 Population based on U.S. Census Bureau  
2020 Occupied Jobs based on U.S. Bureau of Economic Analysis

2045 Forecasts by Woods and Poole Economics and GNRC Land Use Model

# Our Approach



## Involvement of the community, and in collaboration with:

- The municipalities of
  - La Vergne,
  - Smyrna,
  - Murfreesboro, and
  - Eagleville

## in partnership with:

- Greater Nashville Regional Council (GNRC)

# Planning Process

**Step 1.**

**Vision &  
Expectations**

**(Listening)**

**Step 2.**

**What If  
Scenarios**

**(Brainstorming)**

**Step 3.**

**Strategy and  
Planning**

**(Deciding)**



# LISTENING

## Visioning & Expectations



### Community Values

What is important about the community?

Values will inform the vision.



### Community Vision

How does the community imagine the physical, economic, and social fabric of the county?



### Community Goals

The goals provide direction and set expectations for the plan.

# BRAINSTORMING

## What If Scenarios



### Community Profile & Growth Projections

What has changed? And based on those historical trends what can we anticipate in the future?



### Alternative Growth Patterns

Where and how will we grow?  
What if we do it differently?



### Priorities & Tradeoffs

How do these align with the community's vision? What impact does our growth pattern have on community priorities? What are the tradeoffs?

# DECIDING

## Strategy & Planning



### Strategies & Actions

Develop strategies and actions that align with the community's values and vision and implement the goals



### Land Development Map

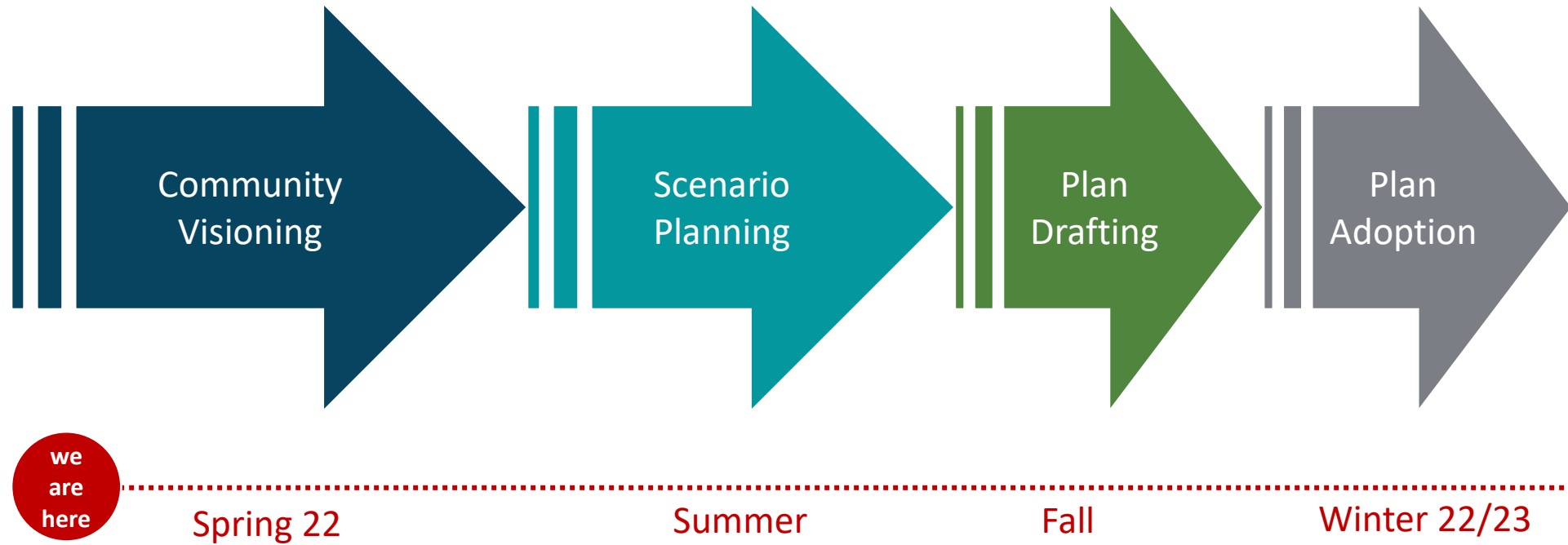
Identifying where to grow and what type of development to encourage in the County and what transportation infrastructure is needed to support the development.



### Implementation Guidance

Providing guidance to staff, stakeholders, and officials on how to use the plan in everyday decision-making.

# Anticipated Timeline



# Implementation of the Plan

## **PlanRutherford will guide decisions and policy through:**

- Updates to the zoning ordinance and map to align with community vision,
- Identification and assignment of resources (staff and financial) to implement community vision, and
- Development and policy recommendations reviewed by staff, appointed and elected officials.

# Staying Engaged

# Ways to Engage in the Listening Phase

4 Community  
Workshops

Online  
Surveys

Planning Staff  
& Website

Opportunities to Stay Engaged in the  
Planning Process

# Ways to Engage in the Listening Phase

4 Community Workshops

Online Surveys

Planning Staff & Website

- Engage county leadership and local experts on growth and development trends
- Map your concerns
- Share your vision



# Ways to Engage in the Listening Phase

4 Community  
Workshops

Online  
Surveys

Planning Staff  
& Website



- First survey available now
- Additional surveys available throughout the process

# Ways to Engage during the Update Process

4 Community  
Workshops

Online  
Surveys

Planning Staff  
& Website

- [PlanRutherford.org](http://PlanRutherford.org)
- Stay in touch with your county planning staff

# Public Website

[PlanRutherford.org](http://PlanRutherford.org)



# Share Your Opinions

Take a Brief Survey to Share Your  
Opinions and Preferences about  
Rutherford County's Future



**SCAN ME**

# Thank you for joining us!

**We're excited to meet you and to hear your opinions on Rutherford County's future growth and development.**

When you are ready, please proceed to the Let's Map it! station.